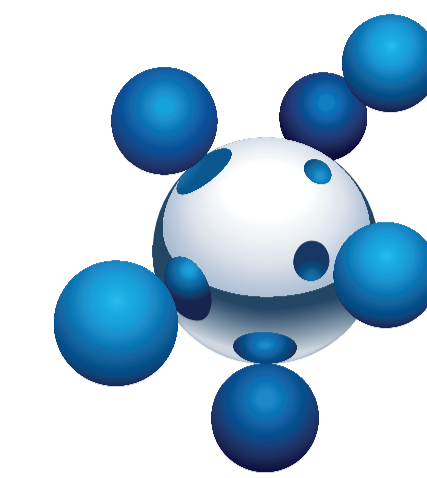


SASOL LIFE SAVING RULES

Caring for the safety of all employees



SASOL



PERMIT TO WORK

- I will obtain a permit to work, for non exempted tasks, before starting with work.
- I will only work on equipment that is positively identified (touch and tag).
- I will ensure process isolation is in place as per procedure.



CONFINED SPACES

I will only enter a confined space under permit conditions.



LOCK OUT AND ISOLATION

I will only work on isolated and safe electrical equipment that is locked out.



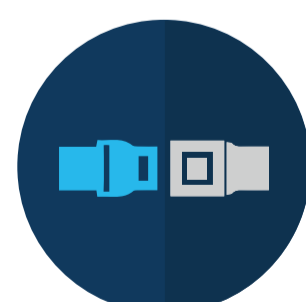
IGNITION SOURCES

I will only cut, grind and weld in a classified area with authorisation from the permit issuer.



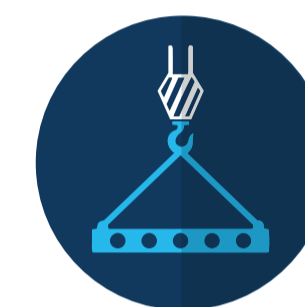
EXCAVATIONS

I will obtain authorisation and ensure that shoring (if applicable) is in place before entering an excavation.



ROAD SAFETY

- I will keep to the speed limit.
- I will verify that a road is safe to cross before attempting to do so



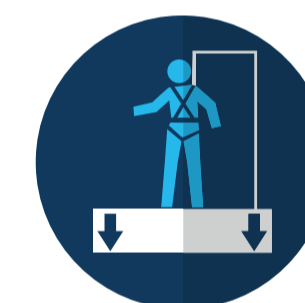
LIFTING OPERATIONS

- I will stay clear of drop zone of suspended loads.
- I will ensure, as task executor that I keep people clear of the drop zone of suspended loads.



HEAVY MOBILE EQUIPMENT

I will keep clear of heavy mobile equipment in operation.



WORKING AT HEIGHTS

- I will remain continuously tied-on where there is a risk of falling (> 2m).
- I will make an effort to secure all tools and equipment at heights to prevent it from falling.



ALCOHOL AND DRUGS

I will only report for duty alcohol and drug free.



PERSONAL PROTECTIVE EQUIPMENT

I will ensure that I use the specialised life preserving PPE e.g. breathing apparatus, chemical suits and arch flash suit, when specified.

* Excluding mining specific life saving rules

ALWAYS ADHERE TO THE PRESCRIBED PROCEDURES FOR SAFE TASK EXECUTION TO ACHIEVE ZERO HARM